

Kyogle Landcare

February Update 2019

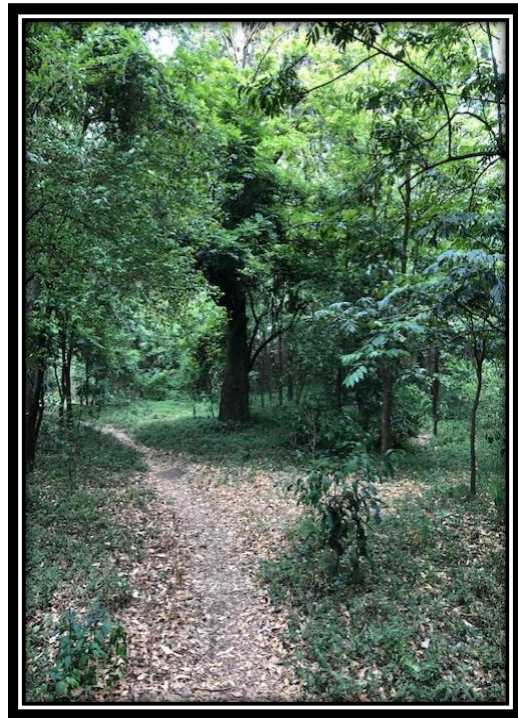


Fawcett's Creek

If you haven't recently been down to Fawcett's Creek find the time to do so. The changes that have been wrought by a committed team of weed warriors is astounding!

Since March 2018 volunteers have completed over 700 hours of work removing invasive weeds. These weeds include a variety of garden escapees including (but not limited to): Balloon Vine, Madeira Vine, Morning Glory, Coral Berry and Chinese Celtis.

At the next Landcare meeting we will begin the process for deciding what our



Fawcett's Creek regen work

BE ALERT AND INVOLVED

interpretive signs will look like. If you have ideas please come along. If you are unable to attend please email any ideas to robdrury3@gmail.com

Working with Rous Water

On Friday the 25th of January we met with Rhett Patrick from Rous Water and Kylie Van der Kolk from North Coast Local Land Services. Rhett and Kylie were treated to a tour of various sites along Horseshoe Creek to see the impact of Job's Tears and successful methods of control. This is the next step in what has been a long process to have an new invasive plant listed as a weed and to get action to contain it. We look forward to working with Rous to continue the control of this weed.



Re gen - Fawcett's Creek



Did you know?

- Research published in September in the Pacific Conservation Biology Journal reveals that invasive pests are the **No1 threat** to Australia's most at-risk species, above climate change, land clearing or, energy production.
- Around 10 invasive plants are established each year.



Plants for sale

- ◆ Birdwing Butterfly Vines
- ◆ Black beans
- ◆ Callistemons
- ◆ Small leaf Tamarinds (quite rare)
- ◆ A range of other native plants.
- ◆ Call in to collect between 9 and 12 every Tuesday.

Upcoming Events

- ◆ First meeting for 2019 is the 5th of Feb, 6pm, Landcare Office.
- ◆ Advanced notice AGM – 5th Of March 6pm, Landcare Office
- ◆ Nursery and regeneration team every Tuesday 9am until 12ish.
- ◆ Working Bee Horseshoe Creek 17th of February
- ◆ Working Bee Fawcett's Creek 23rd of February
- ◆ Women in the Bush [Details](#)
- ◆ For details of upcoming events visit. [Kyogle Landcare](#)
- ◆ For the most up to date news on Landcare NSW visit [monthly update](#)

